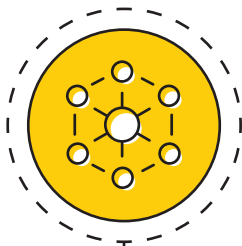


CAMPUS SAFETY REALIGNMENT

Executive Summary

Campus safety is an institutional priority, and the University of Iowa is dedicated to providing effective safety and security measures, personal safety planning, and support and care resources for individuals in distress. The Campus Safety Realignment project provides a comprehensive approach that involves reimagining functions and teams, clarifying roles, setting expectations for communication and collaboration, and developing a shared institutional dashboard.

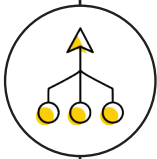


CREATE STRUCTURE

Realign the current safety, security, and operations functions into a Campus Safety organization with distinct units reporting to the Assistant Vice President for Campus Safety.

PHASE 1

- Establish new, multidisciplinary, **Campus Threat Awareness Roundtable (CTAR)** that meets weekly to improve communication regarding high-risk, concerning, or potentially public cases.
- Realign the **Threat Assessment Team (TAT)** under the Campus Safety organization to provide increased support, collaboration, and communication while enhancing our ability to meet the Board of Regents, State of Iowa expectations related to threats on campus.



PHASE 2

- Reorganize units and functions currently under the UI Department of Public Safety including UI Police, Office of Clery Compliance, Security, Emergency Management, Dispatch, Fire Safety, and Key and Access Services.



COMMUNICATE

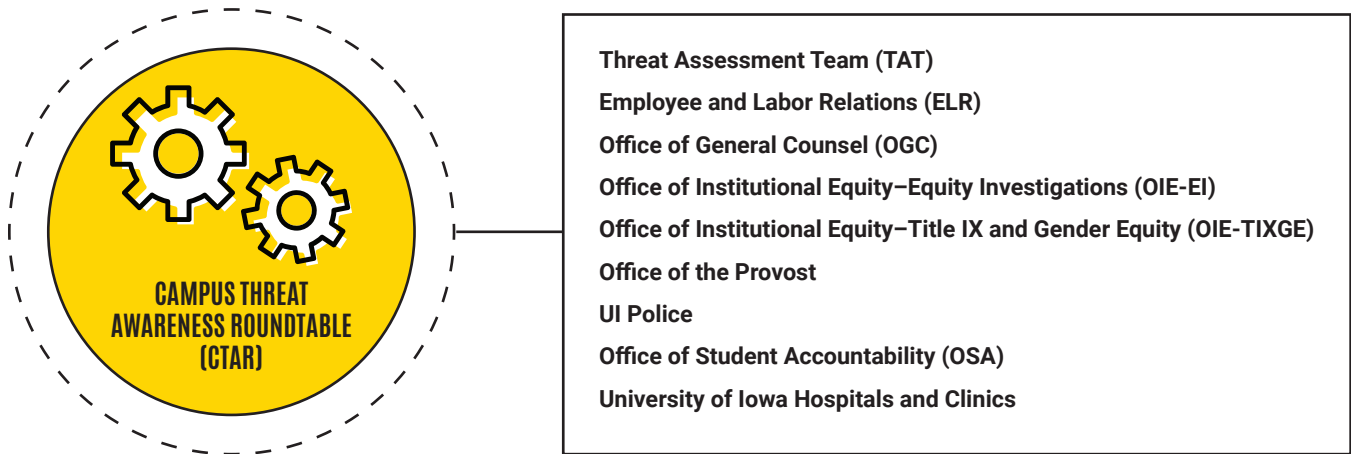
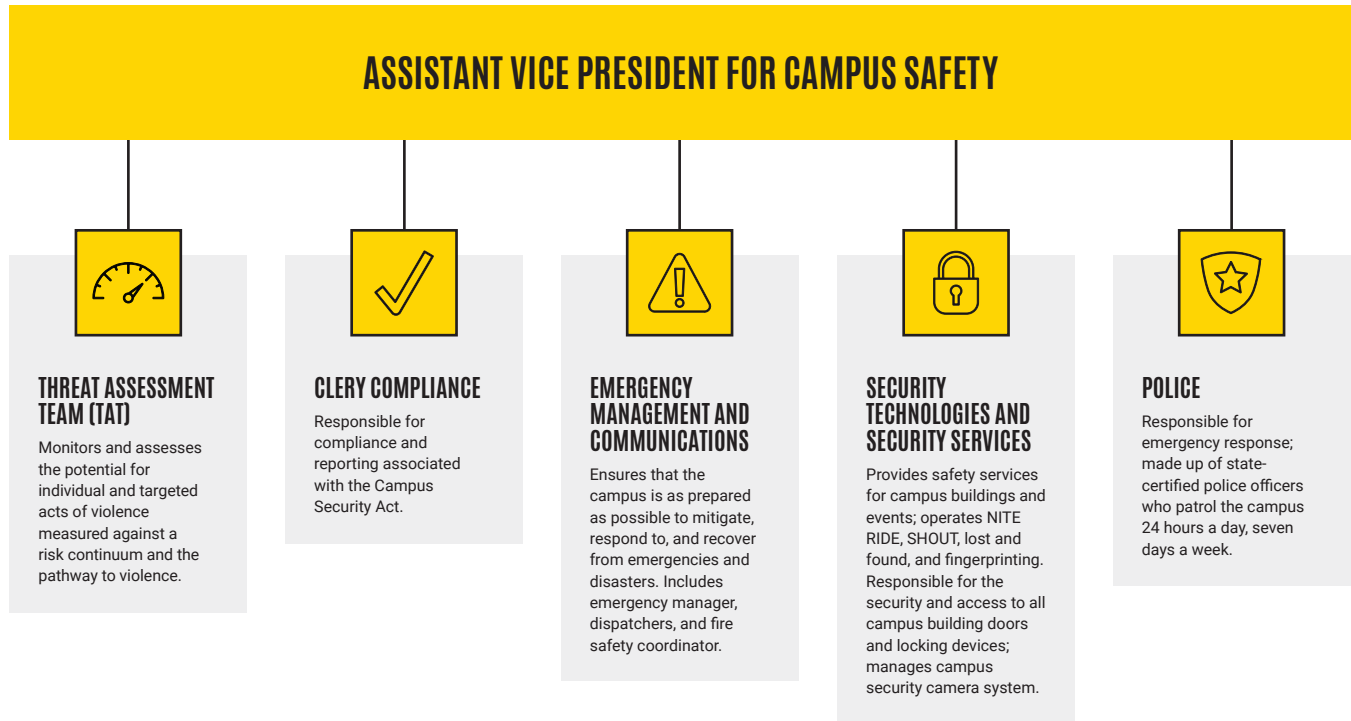
Develop robust communication plans and new tools to support organizational realignment and keep the campus community informed across units.



FORMALIZE PROCESS

Coordinate all administrative, financial, space, and human resources elements to support the realignment initiative.

Realigned Organizational Structure



High-level Timeline

