
University Master Plan: Strategic Planning & Development Efforts

Joe Bilotta

Lead Campus Planner • VP Finance & Operations

A wide-angle photograph of a busy university campus street. The scene is filled with students walking in various directions. In the foreground, a student wearing a black and yellow 'IOWA' backpack is walking away from the camera. The pavement features large, stylized yellow and black graphics, including a large yellow 'H' and a black 'S'. The street is lined with multi-story brick and stone buildings. A clear blue sky is visible in the background. The text 'CAMPUS PLANNING UPDATES' is overlaid in large, white, bold letters across the center of the image.

CAMPUS PLANNING UPDATES

Council Questions

1. Are there projects that you see as transformative to how the campus functions?
2. A status update on current projects on both the East and West sides of campus along with the upcoming projects.
3. What are the plans for moving forward with renovations of buildings like IMU and Tippie? I've heard the Regents have already paused the IMU, how do we plan to make adjustments for projects like Tippie that depend on other projects being completed so departments, staff, faculty actually have the space that is needed/promised?



Major Planning Initiatives

- [Dance Building](#)
- [Graduate Building](#)
- [Jessup Hall](#)
- [Gilmore Hall](#)
- [TCOB](#)

- [IATL](#)
- [MacLean](#)
- [Jefferson Building](#)

- [Childcare](#)
- [Westlawn](#)
- [Cancer Research Building](#)

- [Library](#)

- [IREH/IIHR](#)

- [UCC](#)

- [Field House](#)

- [Iowa River Corridor](#)
- [Hillcrest/Quad Site](#)
- [Burlington to Melrose Corridor](#)
- [CRWC Outdoor Courts](#)
- [Parking](#)

- [Space Analytics \(Office, Instruction, Research\)](#)

- [Utility Distribution](#)

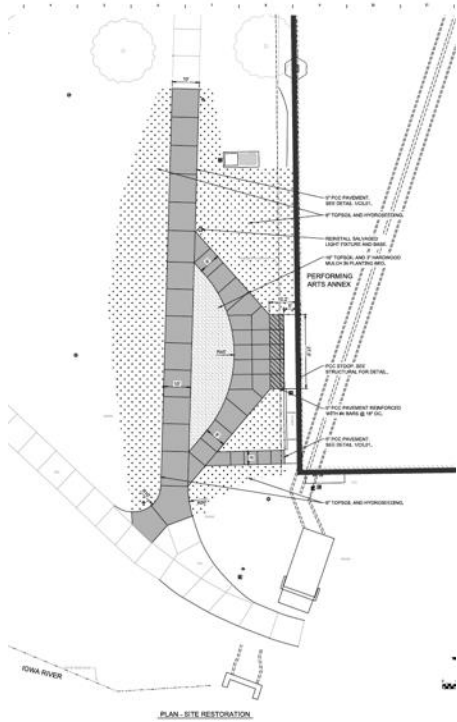
- UIHC
[Inpatient Tower/Enablers](#)
[Site Impacts/Enablers](#)

- [Athletics](#)
Baseball
Carver

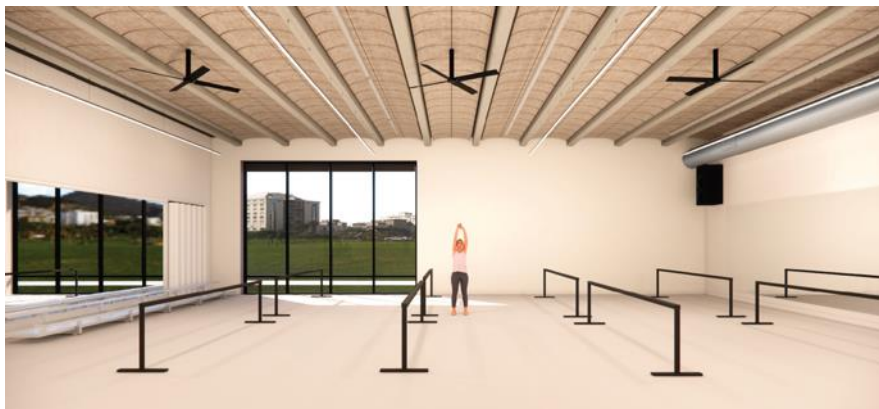
- Student Life
[IMU](#)
[Housing](#)



Dance Building



Dance Building

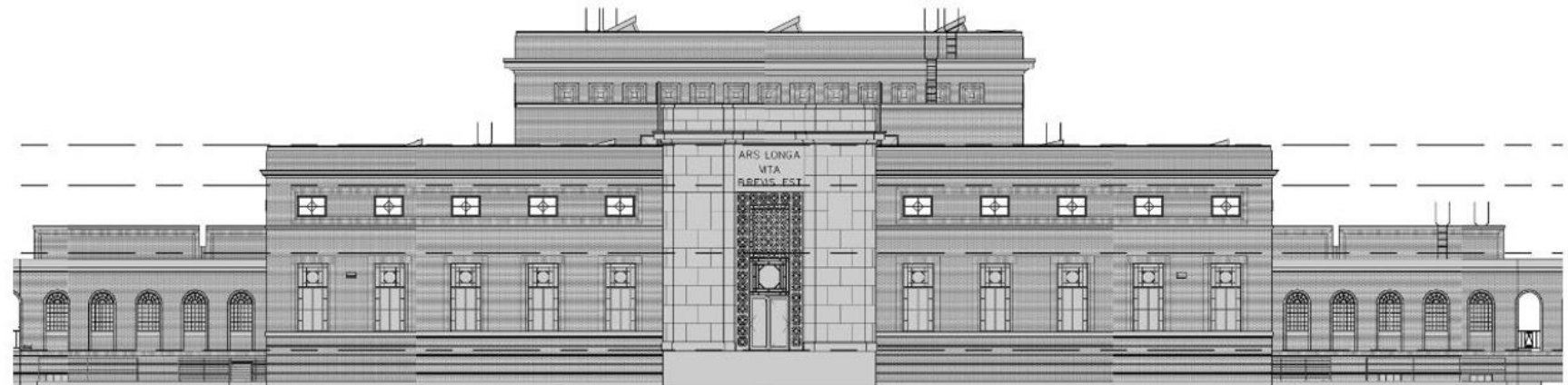
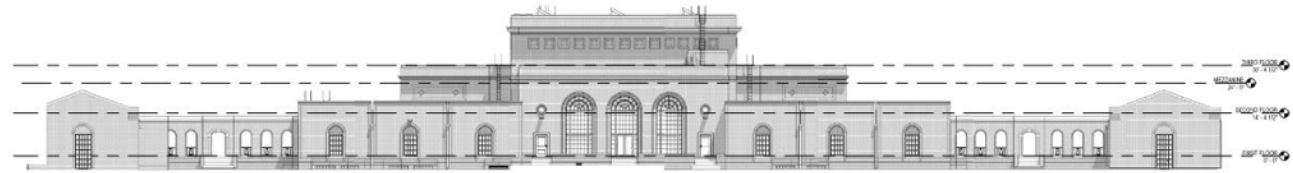
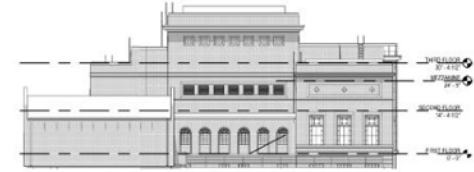
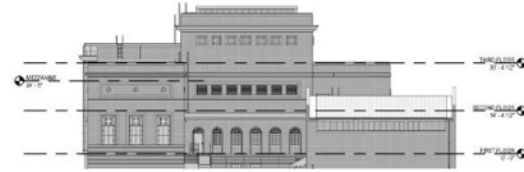
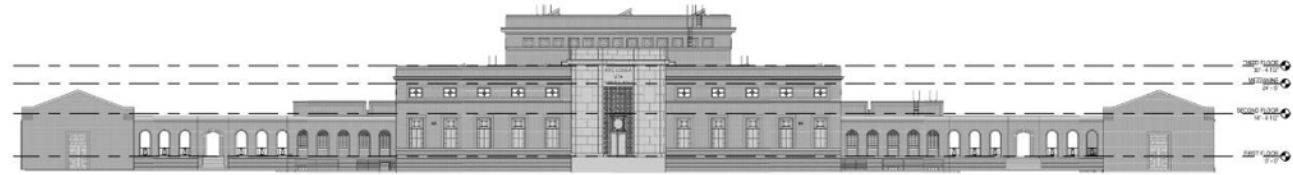


Graduate Building



Project Location:
Original Art Building
Iowa City, Iowa

Graduate Building



East Exterior Elevation

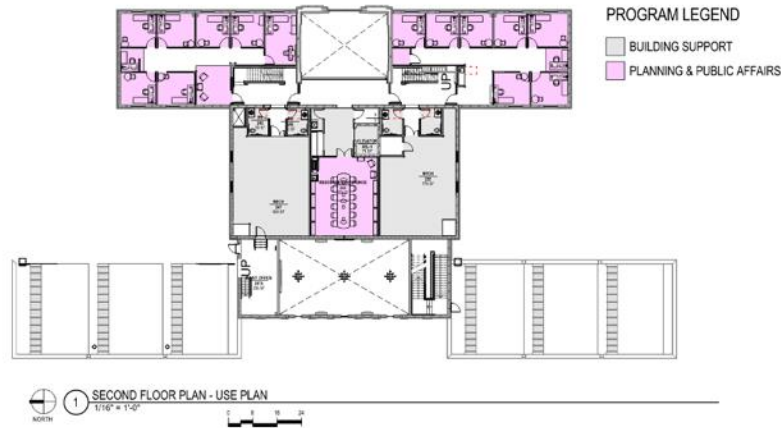
Graduate Building

New Floor Plan



Lower Level

New Floor Plan

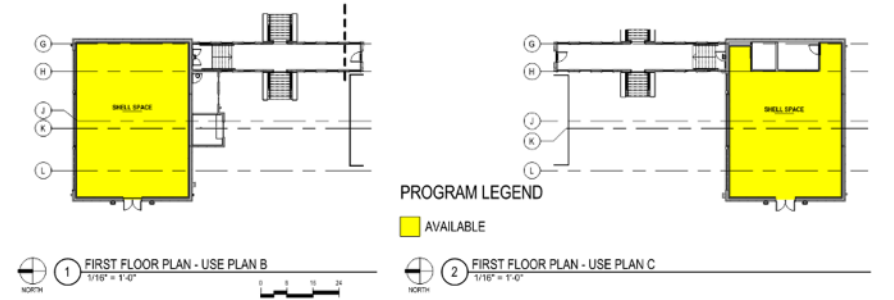


Second Floor

New Floor Plan



First Floor



First Floor Studio Wings

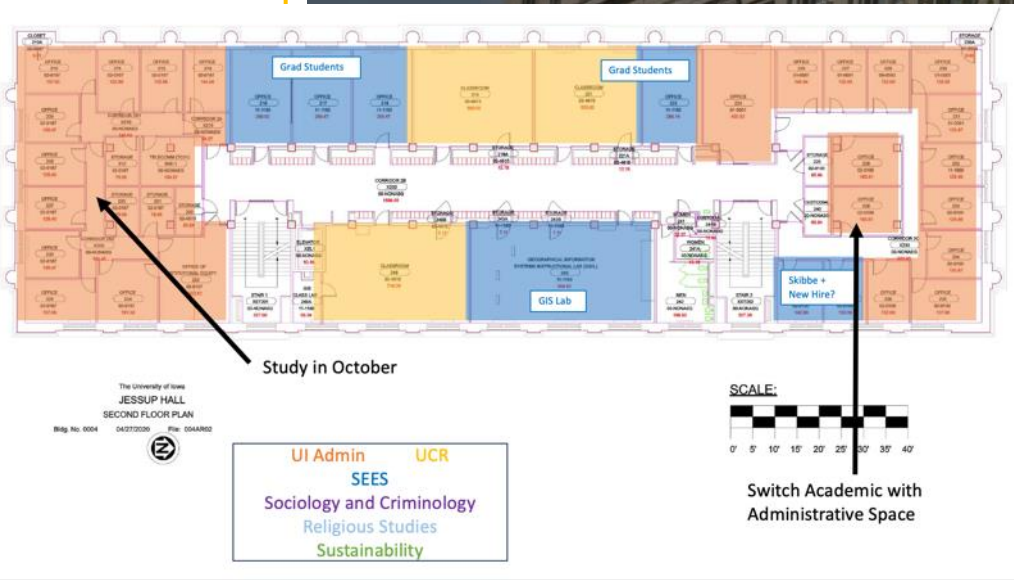
Graduate Building



Graduate Building

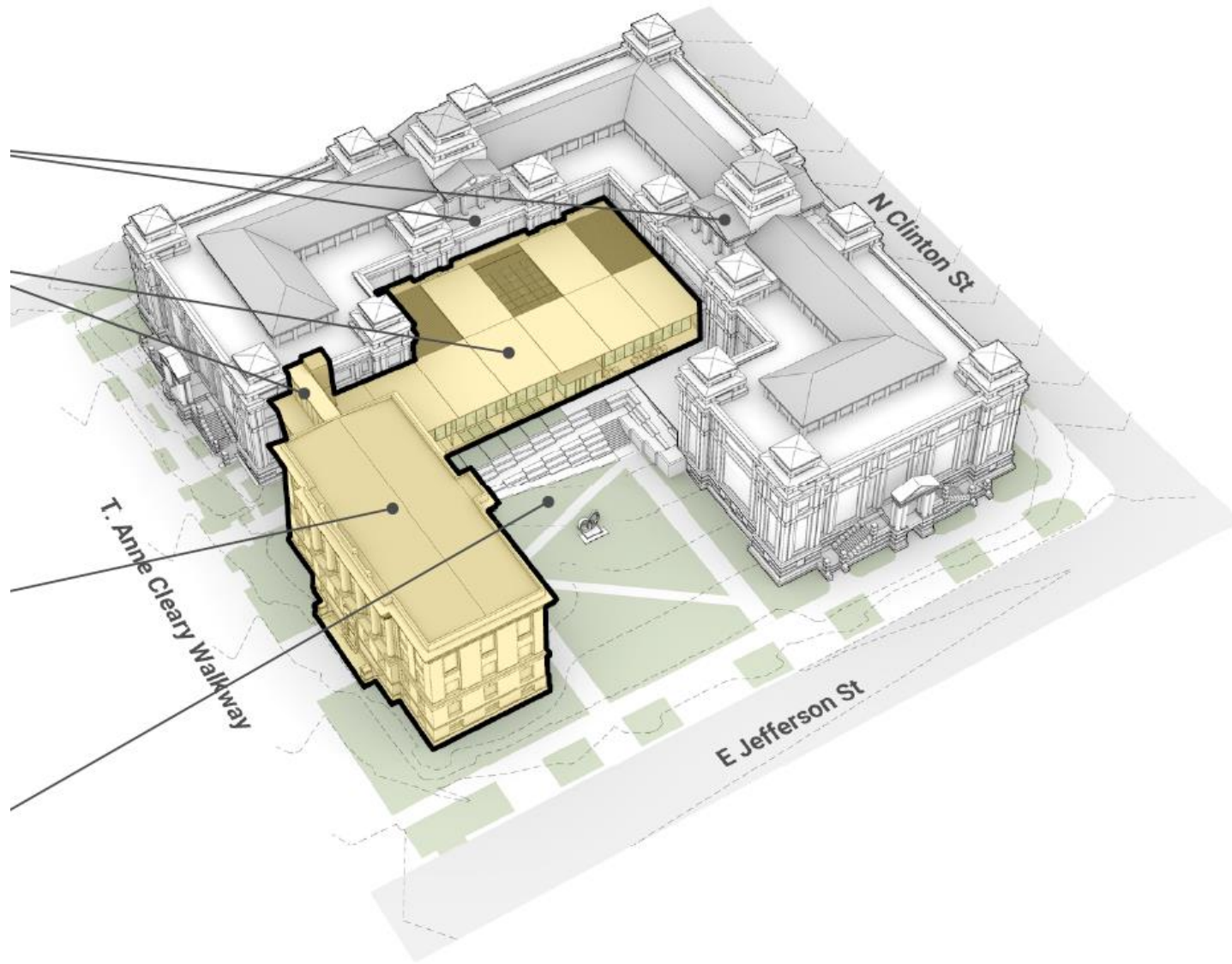


Jessup Hall



Gilmore Hall





IATL



IATL



IATL



IATL



IATL



IATL



IATL



MacLean



Jefferson Building

Department Summary

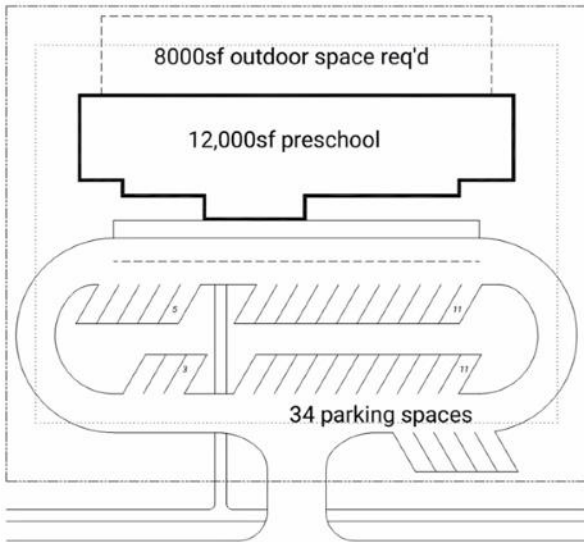
3/8/2025 9:46:50 AM

Department	Department Description	Gross S.F.	Net S.F.
00-GROSS	GROSS AREA	63,164.80	0.00
00-NONASG	UI NONASSIGNABLE AREA	0.00	16,679.33
01-0001	PRESIDENT	0.00	2,195.48
02-0100	OFFICE OF THE PROVOST	0.00	431.13
05-0375	FACILITIES MANAGEMENT SHOPS	0.00	238.95
05-X009	UI UNASSIGNED AREA	0.00	207.93
11-1000	AFRICAN-AMERICAN WORLD STUDIES	0.00	1,253.23
11-1010	AMERICAN STUDIES	0.00	4,375.88
11-1080	CLASSICS	0.00	4,922.44
11-1400	GENDER, WOMEN	0.00	3,422.95
11-1900	LIBERAL ARTS AND SCIENCE ADMIN	0.00	913.01
11-1910	INTER-DEPARTMENTAL UNITS	0.00	125.07
16-2938	UI CENTER FOR HUMAN RIGHTS	0.00	1,050.57
35-0195	GENERAL UNIVERSITY COLLEGE	0.00	1,707.74
43-5073	ITS - ENTERPRISE SERVICES	0.00	870.04
98-9800	CENTRAL CONTROL	0.00	3,698.83
All Buildings Total:		63,164.80	42,092.58

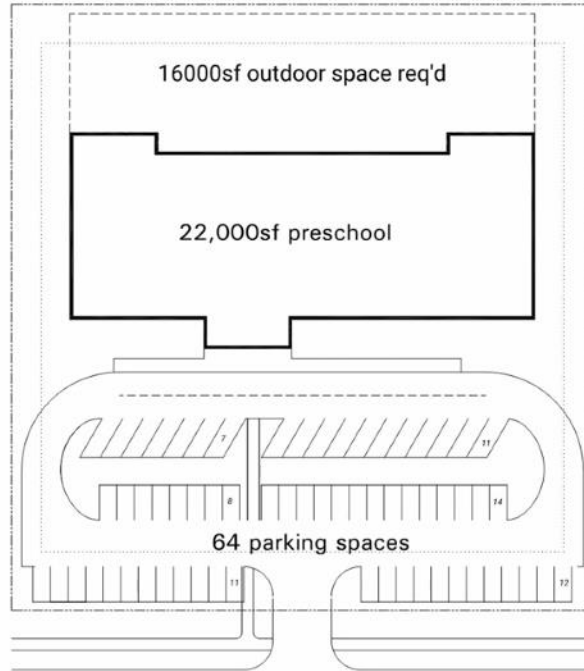


Childcare

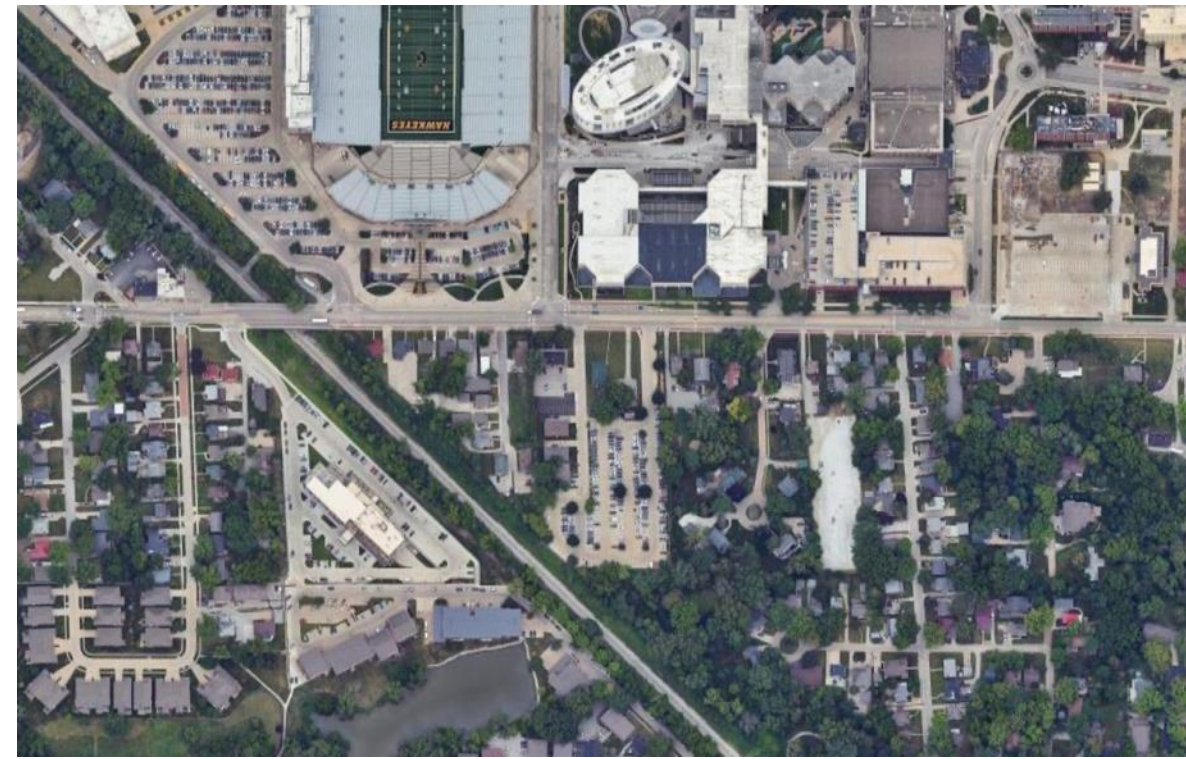
REQUIRED SITE AREA



104 CHILDREN : 1.66 ACRE



208 CHILDREN : 2.13 ACRE



Westlawn



Westlawn

Raze Westlawn Hall



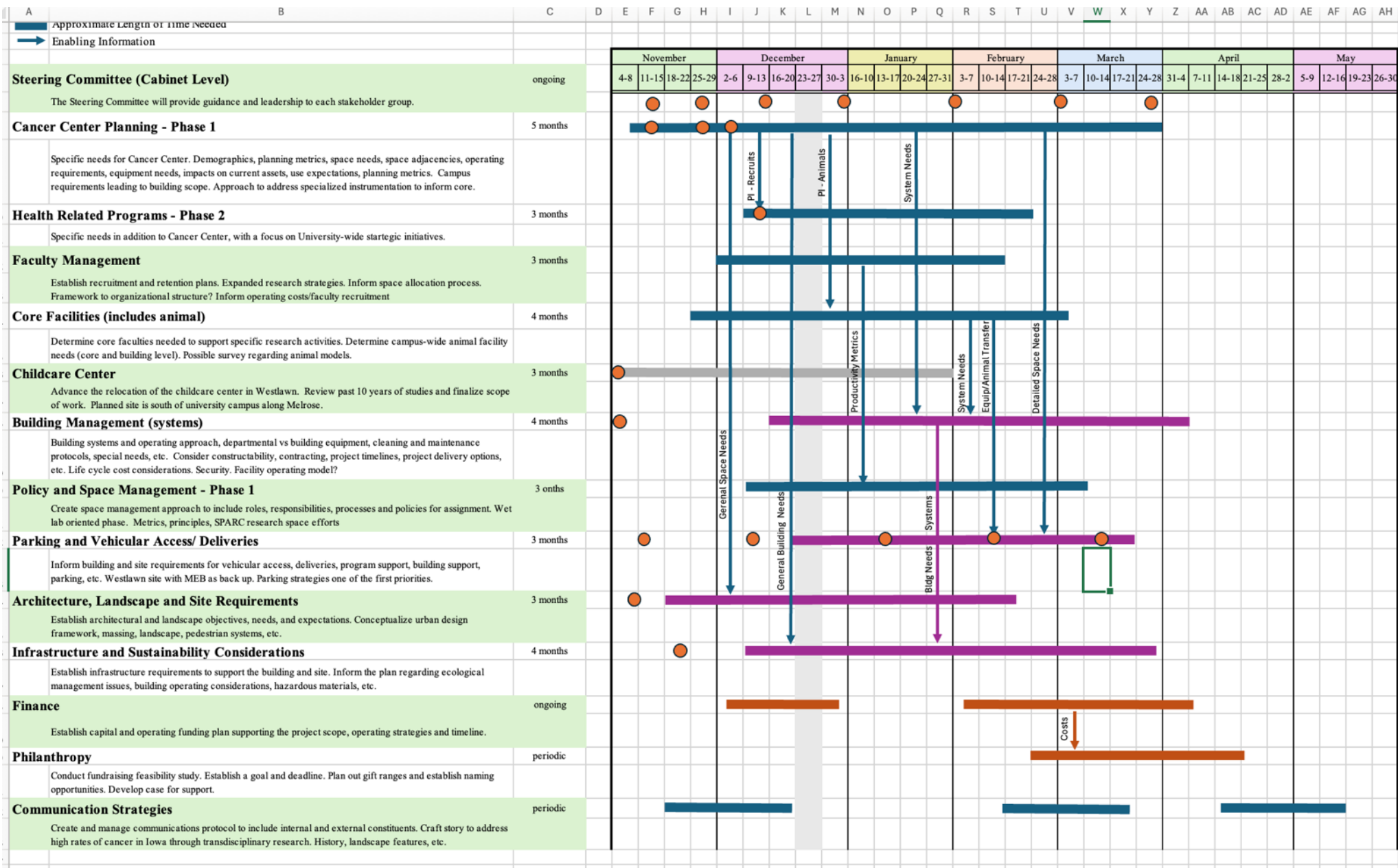
Westlawn Building Department	1st	2nd	3rd	4th	5th	
Unassigned	7,559.00				1,575	9,134
FM Shops	346.00	692			121	1,159
Orthopedic Surgery		5,016	403			5,419
CoPH Epidemiology		4,692			453	5,145
CoPH Occupational Health		3,064			419	3,483
CoPH Mgmt & Policy					808	808
UIHC Medicine Admin		2,190	287	2,092	1,868	6,437
Center for Public Health		1,703		378		2,081
Nursing		861			546	1,407
Public Health Admin		825		80	271	1,176
Research Department		357		1,251		1,608
Grants and Special Projects			9,756			9,756
Student Health Admin			6,410	7,188		13,598
University Counseling			4,677	1,832		6,509
UIHC Marketing & Comm				2,620	5,468	8,088
Wellnes				1,590		1,590
Cancer Center				925	1,748	2,673
VPMA Administration				560		560
Psychiatry				347		347
Consultation and Res, Med Ed				175		175
Ophthalmology				183		183
Pediatrics				191		191
Neurosciences Institute				174		174
Radiology					3,087	3,087
Anesthesiology					700	700
Central Control					532	532
Athletics					173	173
total ASF	7,905	19,400	21,533	19,586	17,769	86,193
total building ASF	86,193					
building GSF	137,239					



Cancer Research

\$292M Total

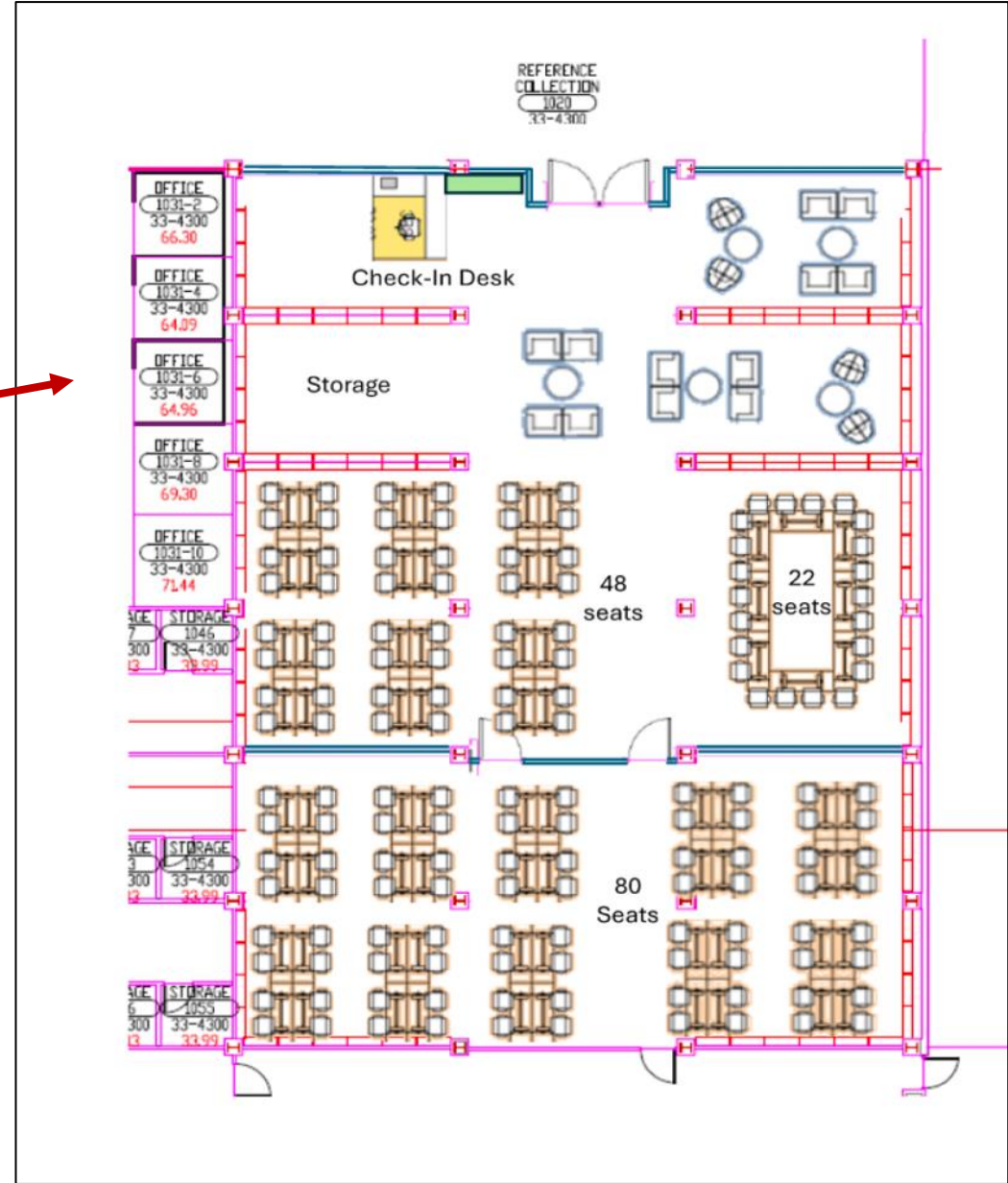
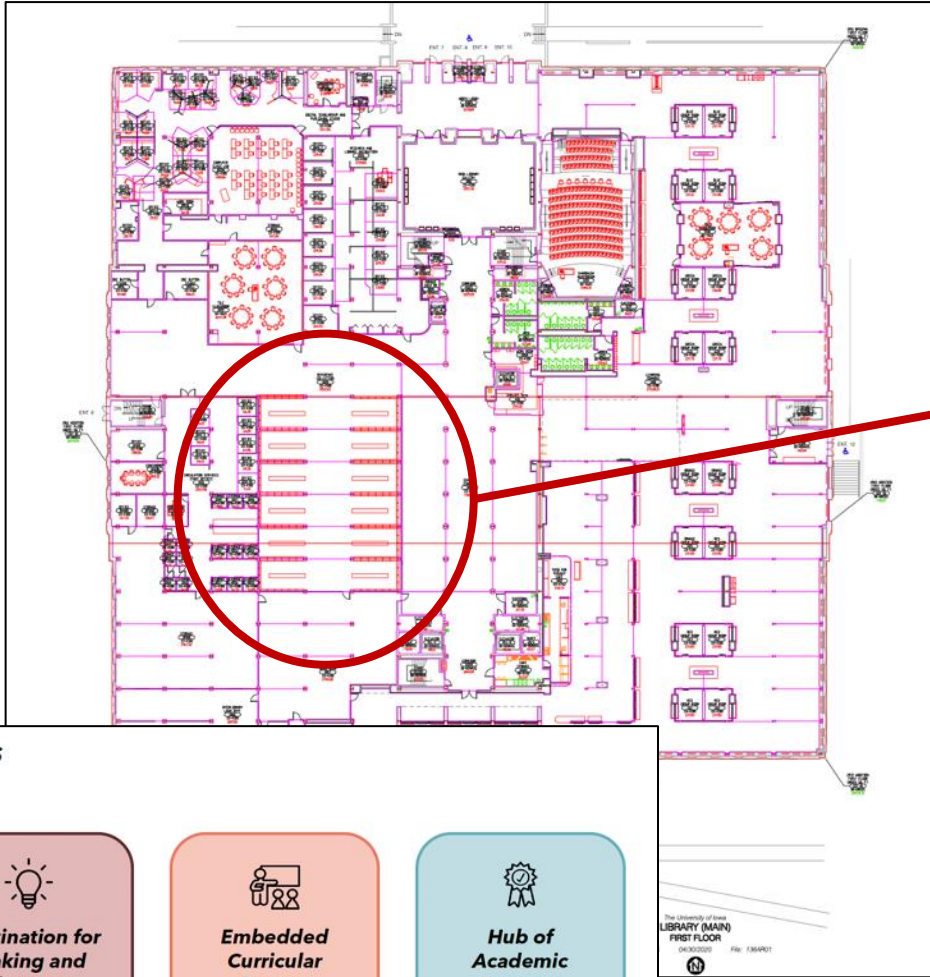
\$54M People
\$238M Building



Library

\$60M. In Deferred Maintenance

Largest Building
470,000 GSF



Four Key Opportunities

Become the campus...

Third Space to Gather and Connect

Supporting and celebrating the research and scholarship of the University of Iowa community

Destination for Making and Discovery

Creating new knowledge through traditional and emerging modes of innovation and making

Embedded Curricular Partner

Exploring curriculum, pedagogy, and information access throughout the entire academic journey

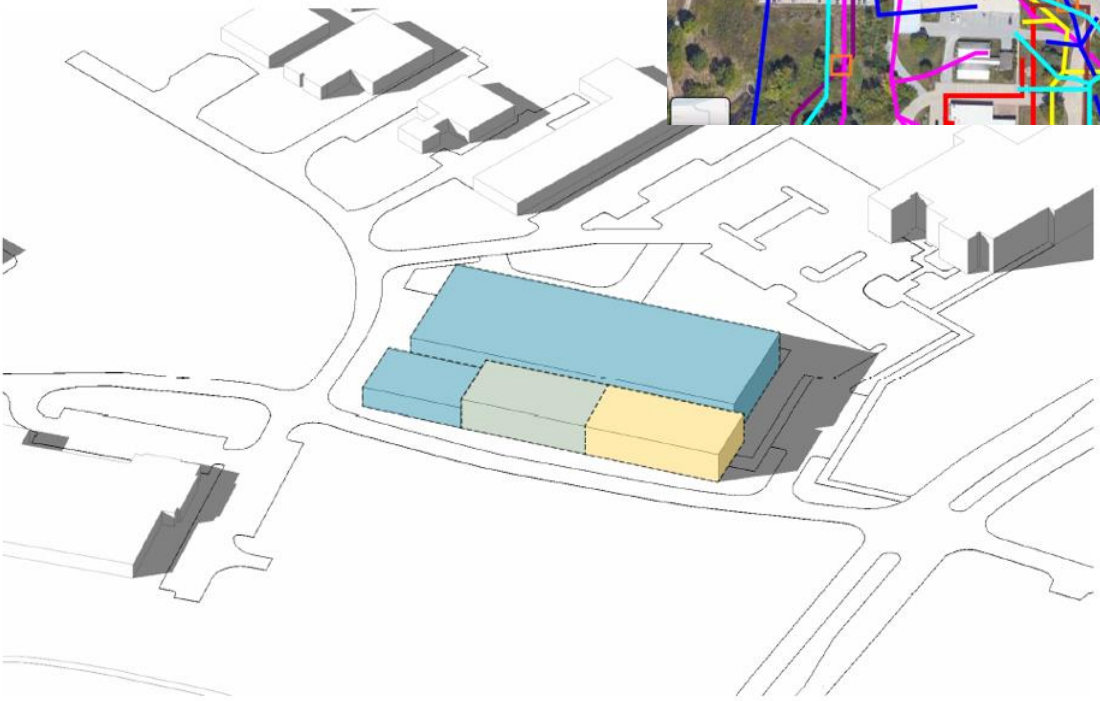
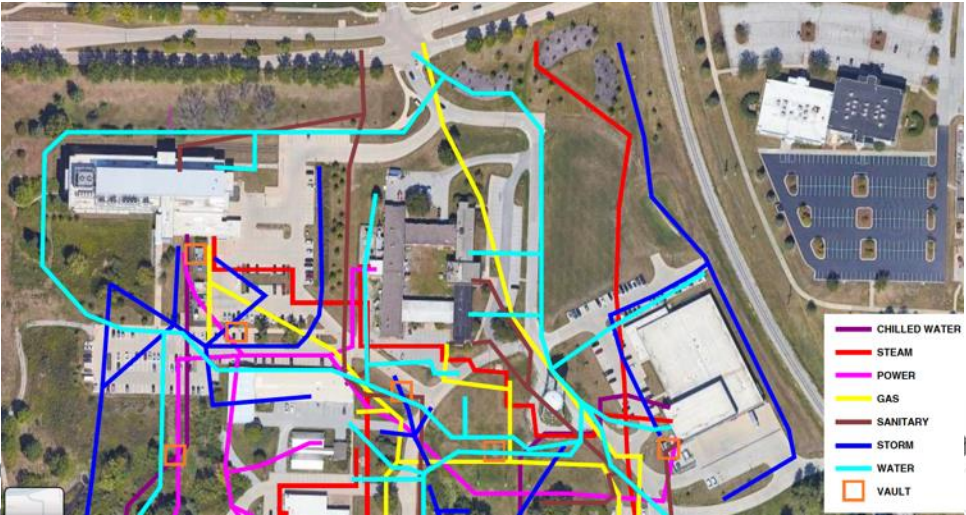
Hub of Academic Success

Accessing and engaging with the full range of academic support services to advance student success

University of Iowa Library - Strategic Visioning



IERH/IIHR



OPTION A



OPTION B



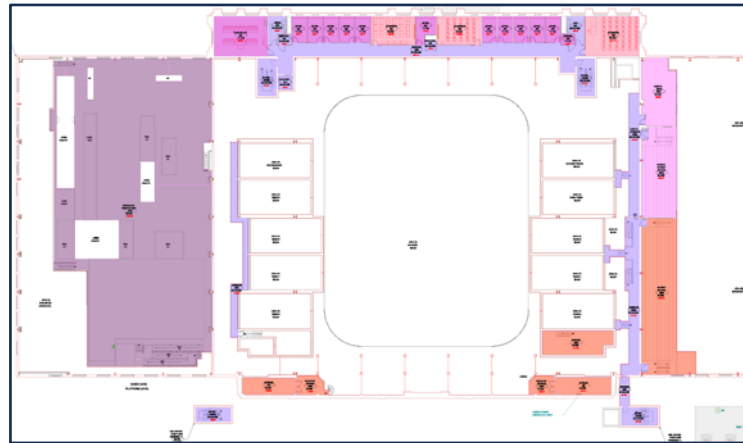
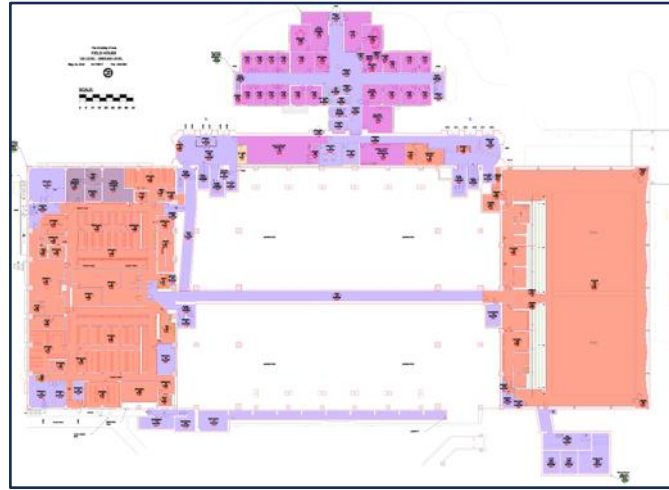
UCC



Field House

Phase I - Team Reps

- CLAS
- Nursing
- CoPH
- CCoM
- University College
- Student Life/Rec Svcs
- Athletics
- Registrar
- UIHC
- CP
- FM



- Rec Services
- Pool/Fitness
- Administration
- Simulation
- Nursing
- Health Expansion
- CLAS Drone Research
- Athletics Dry Training



Iowa River



Unique Settings
Existing Conditions
Concept Plan

- A – Hancher Park**
- B – Lagoon Shelter Park**
- C – Arts River Park**
- D – Riverside Gateway Park**
- E – Library Plaza**
- F – IMU Promenade**
- G – Catlett Hall Front Yard**
- H – Hillside Arboretum**



Hillcrest/Quad

Design Concepts

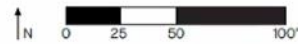
Design B – Biomorphic

QUAD LANDSCAPE

- 1 QUAD HISTORICAL GATE MARKER
- 2 QUAD MEMORIAL PATH & ALLEE
- 3 CONCRETE SIDEWALK
- 4 EXISTING HACKBERRY
- 5 MOPED & BIKE PARKING
- 6 MULTIUSE COURT
- 7 PING-PONG COURT
- 8 OPEN GRASS FIELD
- 9 HAMMOCK GROVE
- 10 OPEN GRASS LAWN
- 11 LOUNGER SEATING
- 12 DECOMPOSED LIMESTONE PATIO
- 13 NATIVE PLANT BED
- 14 EXTERIOR WALL FOR VIDEO PROJECTIONS

HILLCREST COURTYARD

- 15 HILLCREST PLAZA
- 16 SEAT WALL BENCH
- 17 MOVABLE SEATING
- 18 RAISED PLANT BED



Hillcrest/Quad



WC — PROPOSED QUAD COMMONS



Burlington to Melrose

Planning and Preliminary Design

Summer 2024-2025

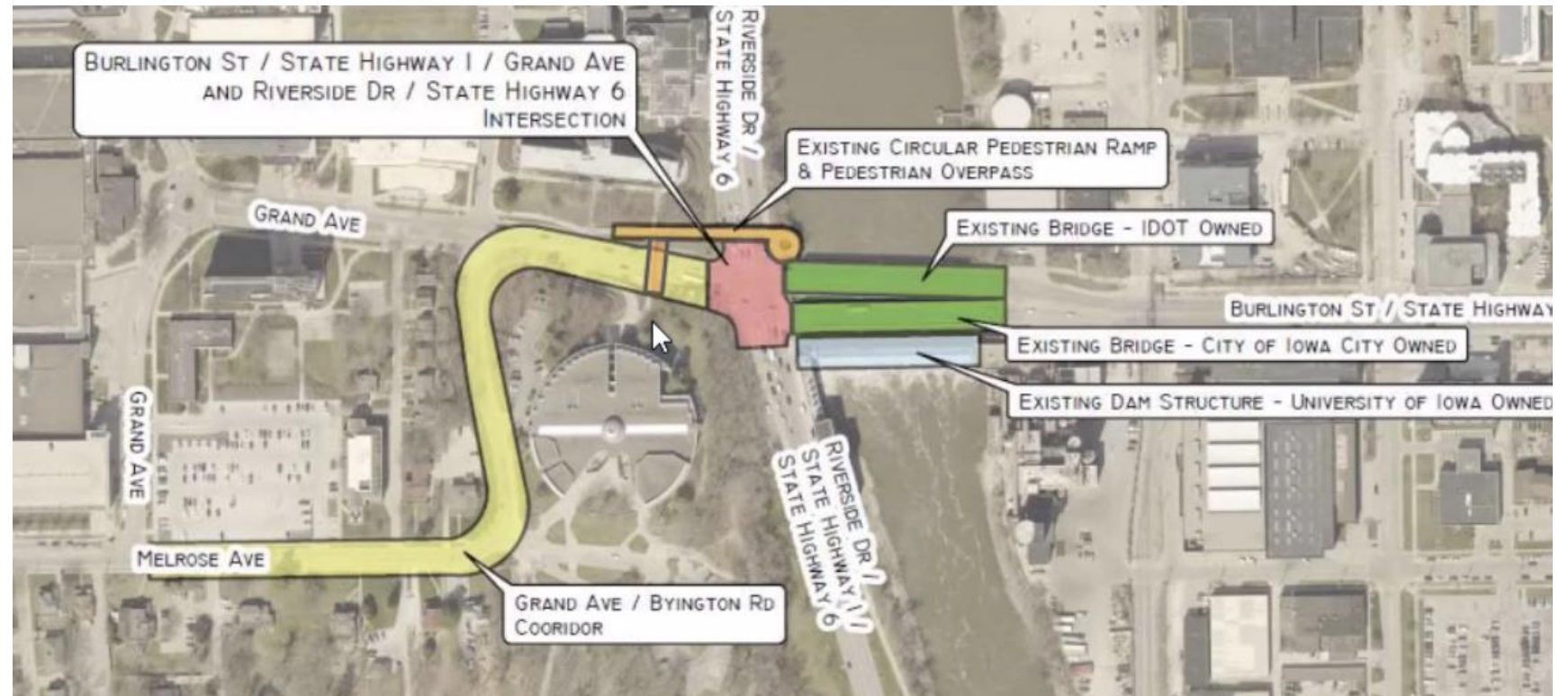
Stakeholder Work Groups, Surveys, Public Meetings, Early Due Diligence

Final Design, Funding, Bidding

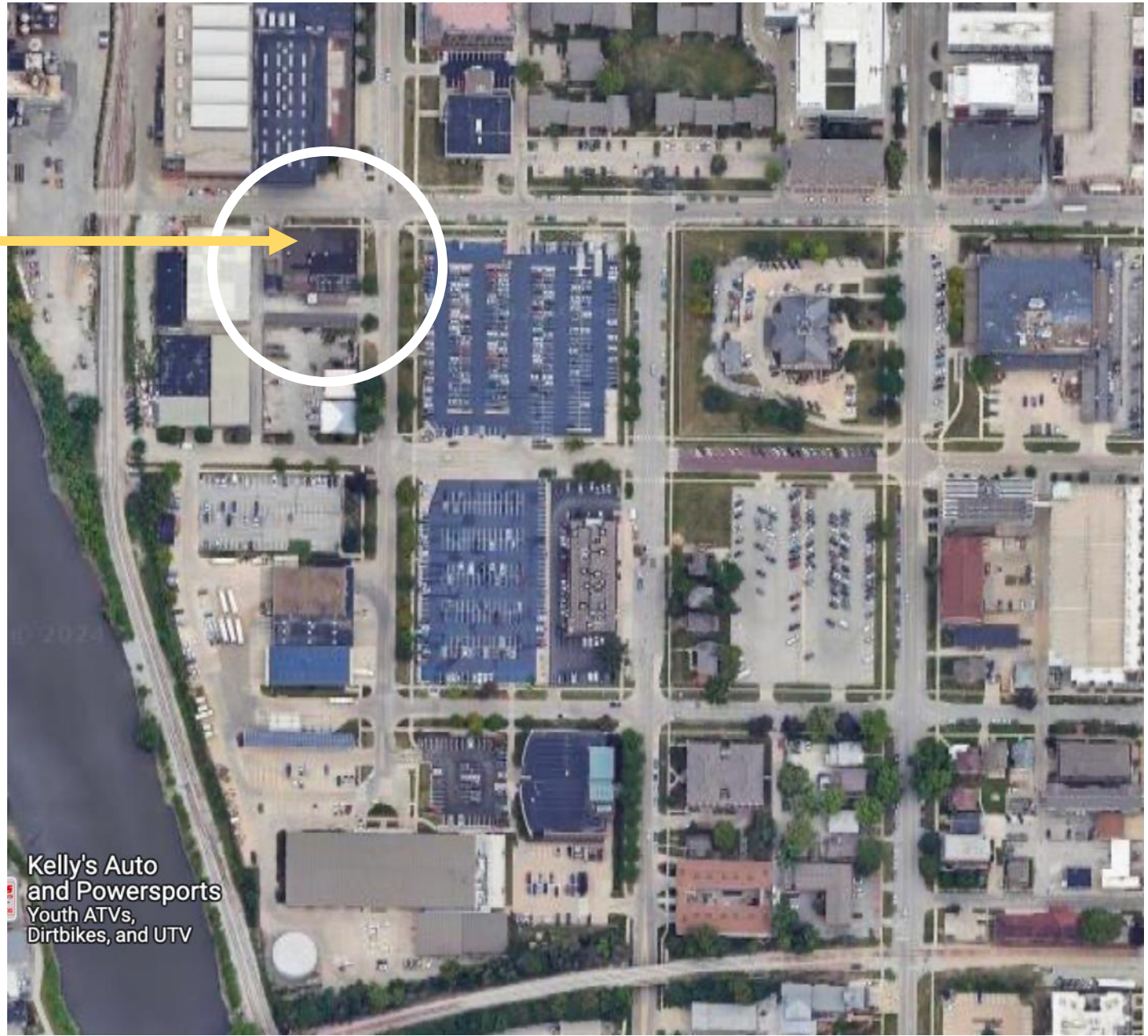
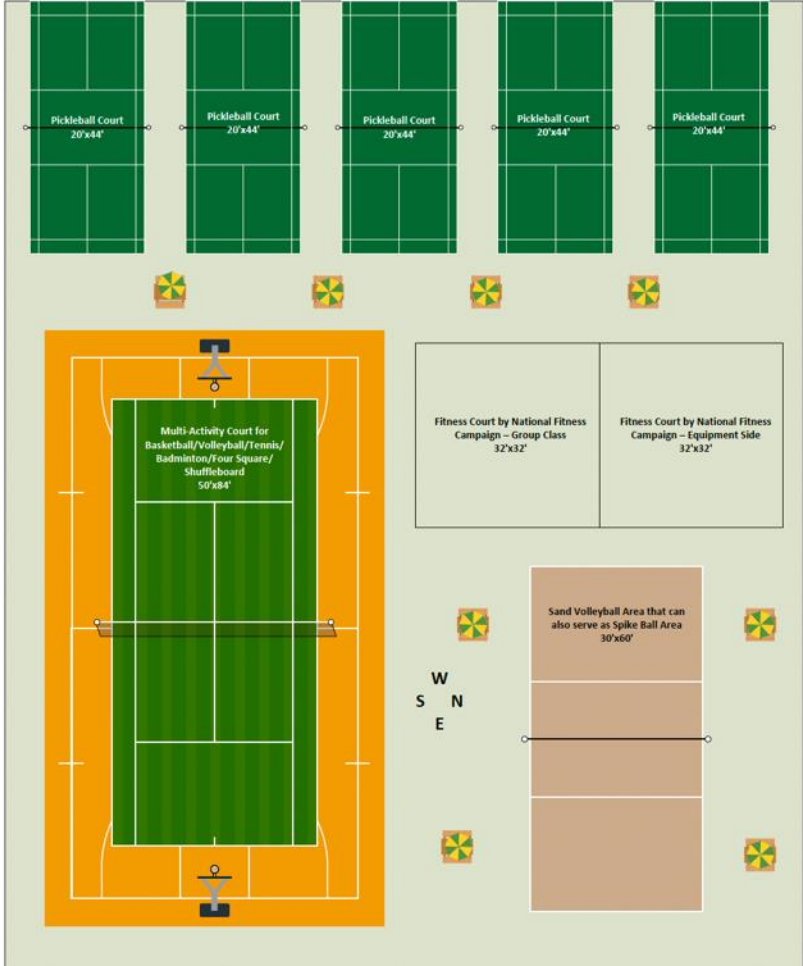
Summer 2026-2027

Possible Construction

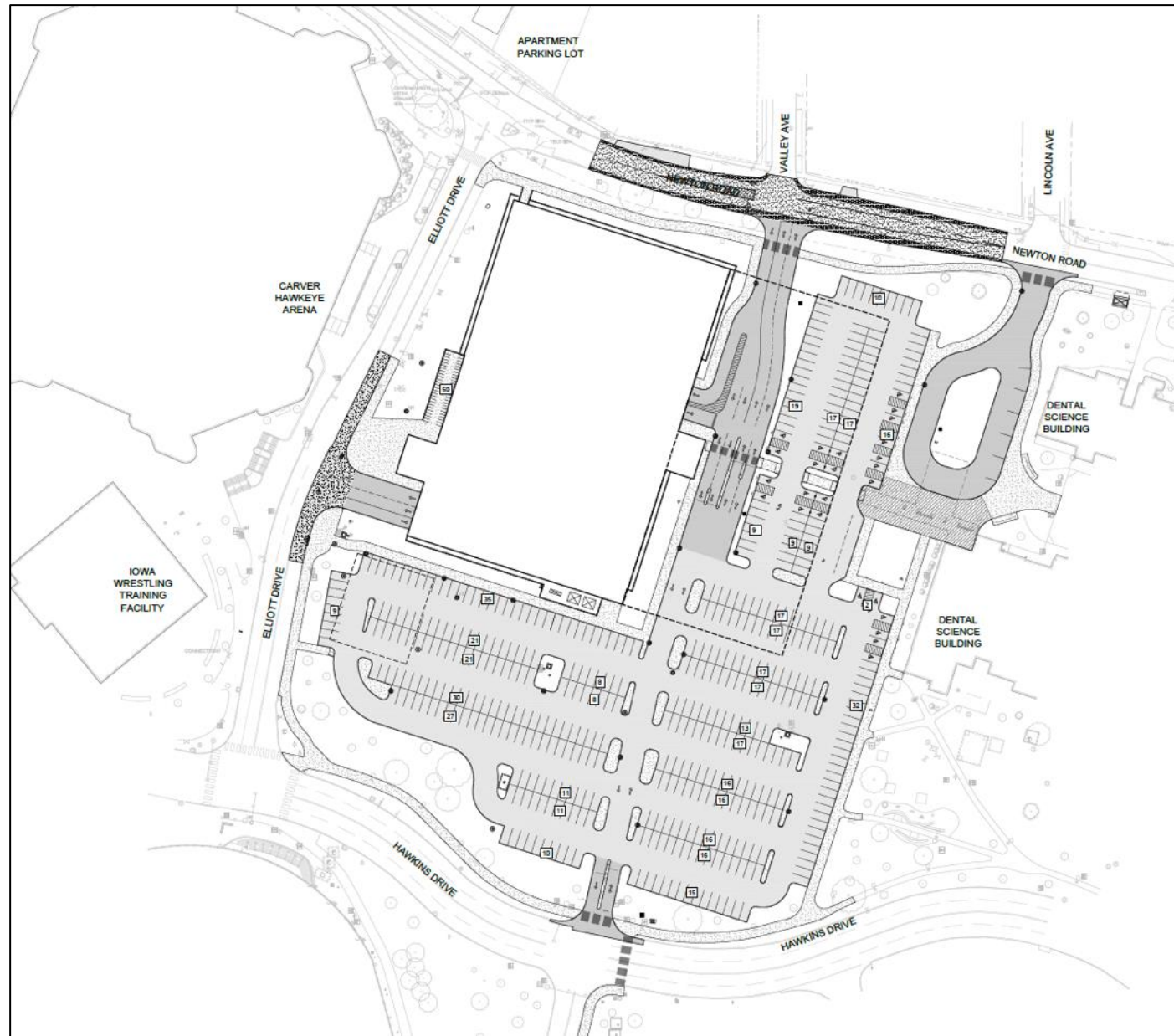
Summer 2028/2029

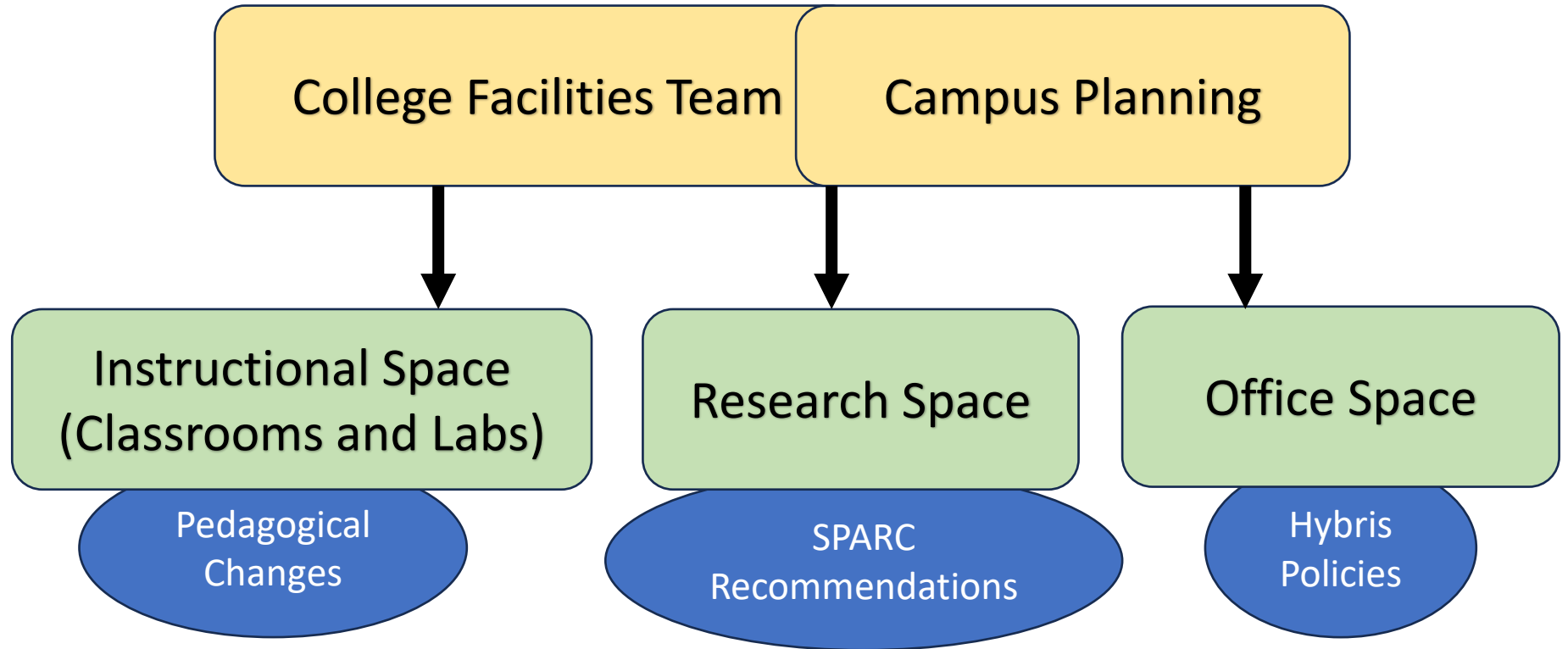


CRWC Outdoor Courts



Parking





Utility Distribution



Utility Distribution



UIHC

New Inpatient Tower (View from Southwest)



- Floors: 15
- Gross SF: \approx 1.0M
- Cost: TBD
- Completion: 2031

- Make-Ready Projects:
 - New Hospital Parking Ramp
 - Demo of HPR 1
 - Demo of Speech and Hearing
 - New Infrastructure
 - New Skywalk
 - Water Tower Replacement
 - New Road Hawkins to Newton
 - New Generator Facility
 - Health Science Academic Building

Enablers



Key

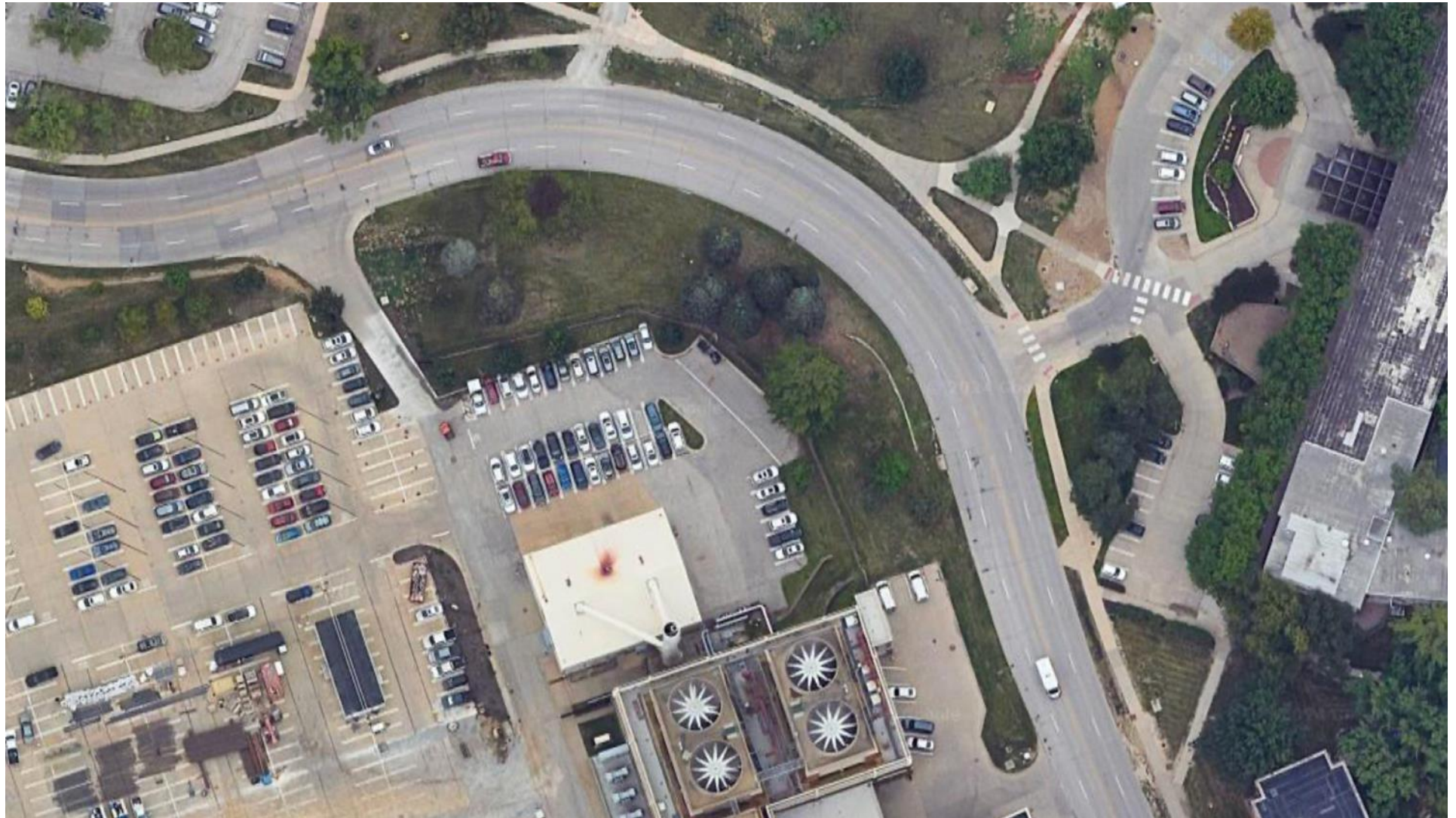
- Inpatient Tower Impact Area
- Buildings to be Demolished (Separate from IPT Project)
- Temporary Entrance Modifications

- 1** Fountain Drive and Temporary Entrance Modifications Start - 7/25
- 2** Temporary Entrance Drive Modifications Start - 7/25
- 3** JPP South Temporary Entrance Modifications Start - 7/25
- 4** Temporary Skywalk Extension and Interior Modifications Start - 7/25
- 5** Concourse Basement Excavation Start - 4/26
- 6** Temporary Utility Modifications: Start - 2/26 (Multiple Locations)
- 7** Enabling Demolition Projects
 - 7.1** Wendell Johnson Speech and Hearing Demolition Start - 9/25
 - 7.2** HPR1 Demolition Start - 9/25
 - 7.3** Water Tower Demolition Start 10/25

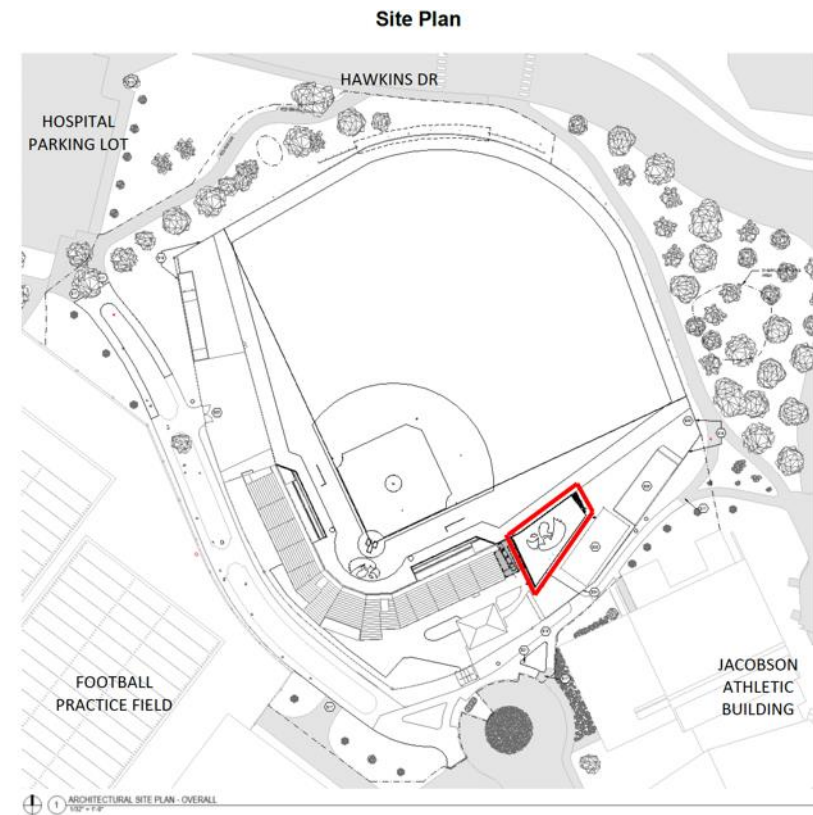
UIHC



UIHC Grounds



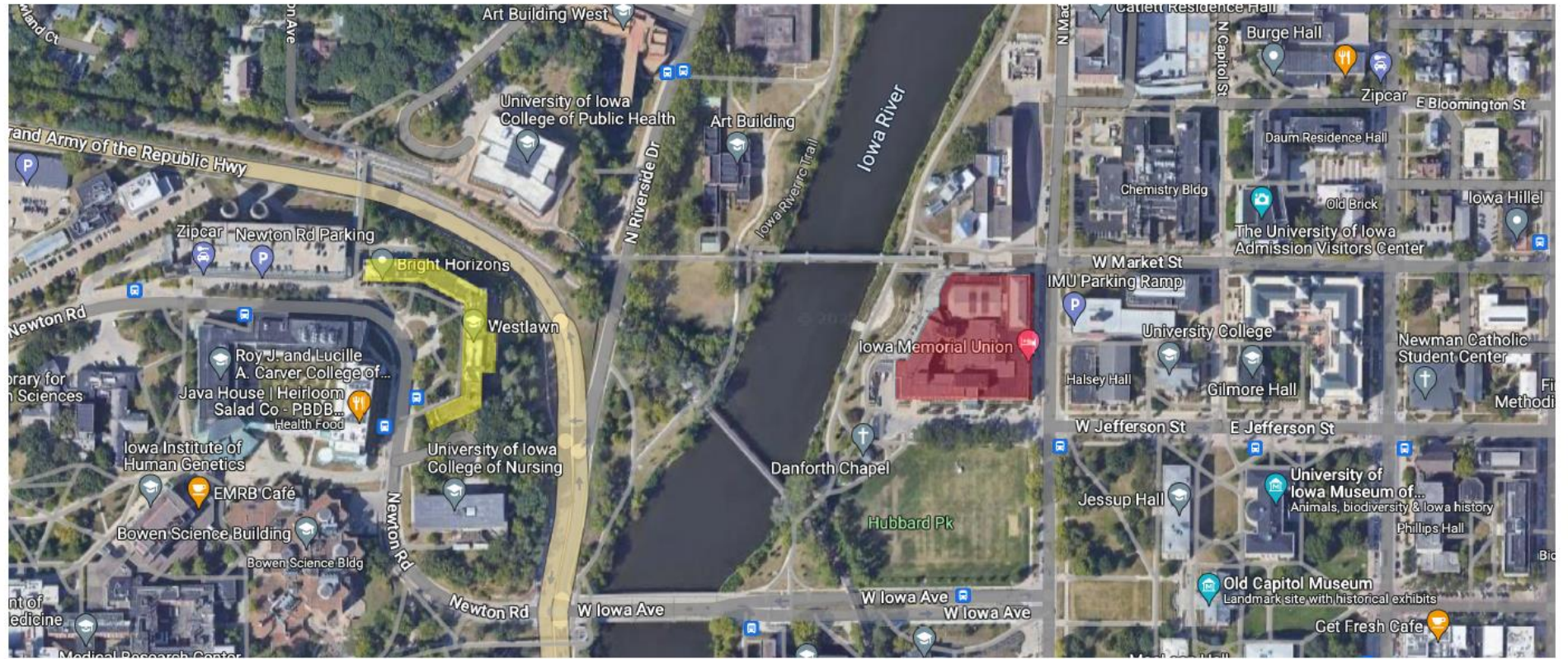
Athletics





IMU

- \$75M in Improvements
- Student Health Relocation
- \$50M in Deferred Maintenance
- Program Modernization







Housing



THANK YOU



IOWA

University Master Plan: Strategic Planning & Development Efforts

Thank you

Joe Bilotta
Lead Campus Planner
joseph-bilotta@uiowa.edu

→ <https://planning-and-development.fo.uiowa.edu/campus-planning/master-planning>