
Leading with Purpose and Compassion in an Age of Disruption

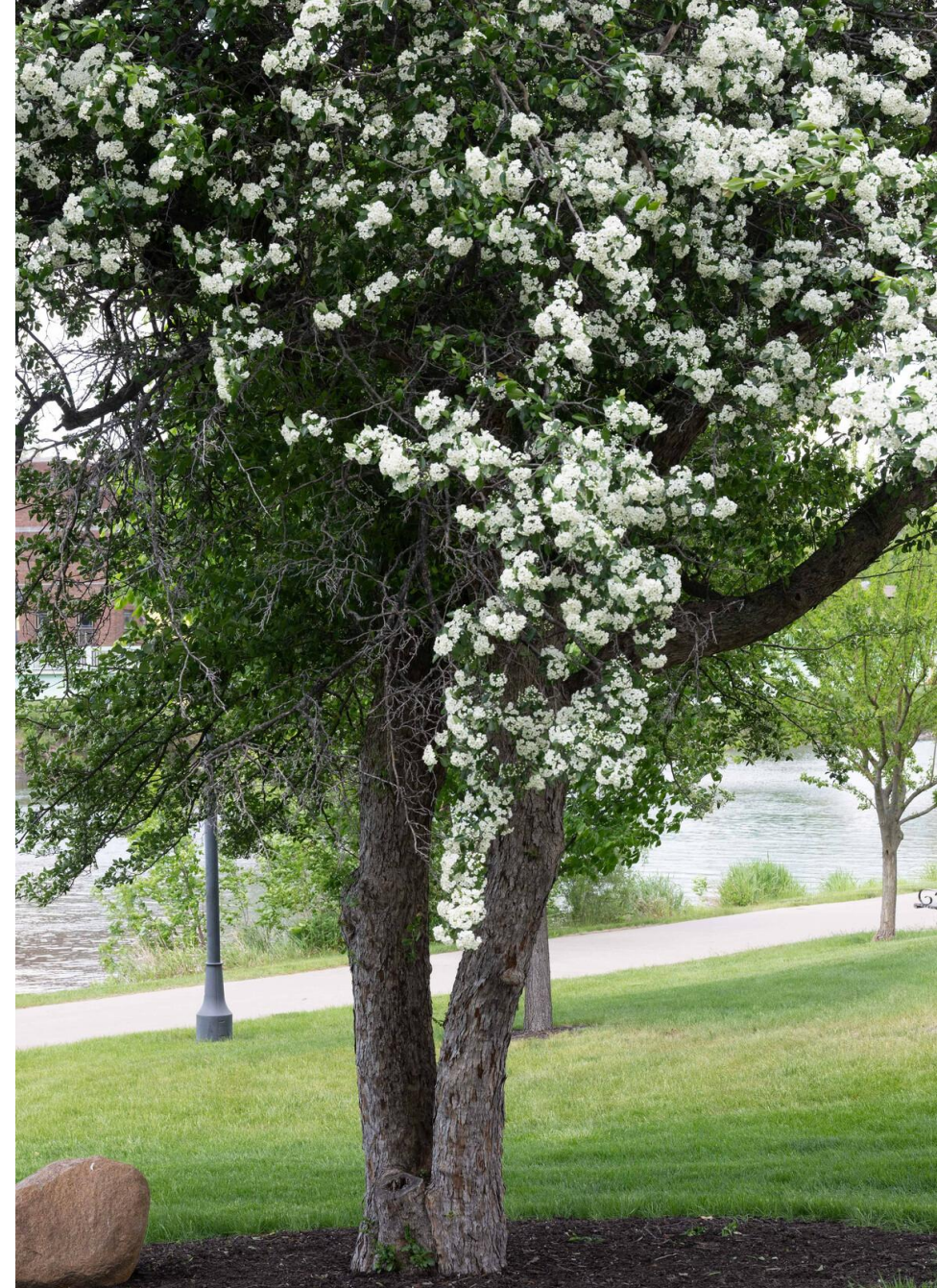
Neda Barrett

Staff Council President

Introduction: The Power of Community

Why This Place Matters

- A spirit of camaraderie and cooperation
- A shared mission and celebration of success
- Where staff support each other and grow together



A People-Centered Institution

Staff- The Backbone of the University

 **Over 9,300 Non-Bargaining Staff Members:**

 **Steady hands** behind the scenes- Staff power daily operations and institutional success

 **Creative minds** solving daily challenges - Each role contributes to a thriving campus community

 **Dedicated professionals** supporting students, faculty, and the broader community

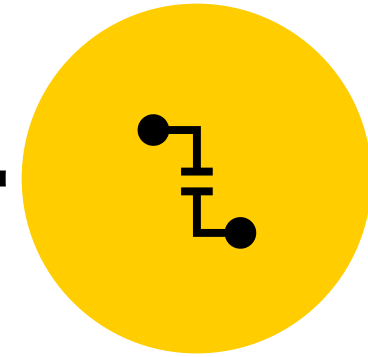
Challenges



**Burnout and
Workload**

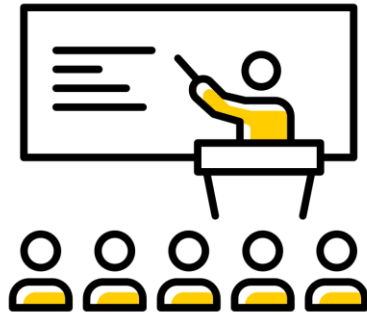


Work-Life Balance



**Feeling Unseen or
Disconnected**

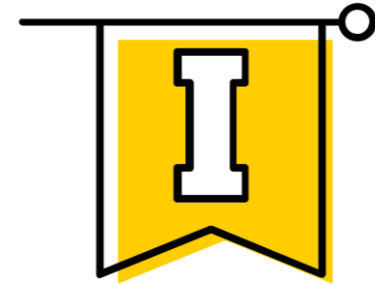
A Moment of Opportunity: Change = Possibility



Higher education is transforming



We have a chance to reimagine how we work and collaborate



The University of Iowa is *poised to lead*

Our Unique Strengths

A University on the Rise ↑

- Among the highest student retention in the Big Ten
- Nationally recognized research & innovation
- Celebrating life-changing work across disciplines



Key Areas

Belonging and Recognition

Foster a culture where everyone feels valued and empowered.

- Recognize and celebrate contributions
- Promote a positive, supportive environment for all
- Support every voice and individual

Prioritizing Work-Life Balance & Well-Being

Staff well-being is not optional – it's essential.

- Advocate for flexible work options where possible
- Embed well-being into our culture

Investing in Professional Growth & Retention

Invest in our people to strengthen our future.

- Prioritize staff retention & development
- Leverage existing talent for improved service
- Support staff with meaningful initiatives

Enhancing Communication & Transparency

Transparent communication builds trust and collaboration.

- Improve Information sharing across campus.
- Make Staff Council efforts visible, accessible, and responsive.

Building Strategic Partnerships for Impact

Align actions with our mission and long-term impact.

- Work collaboratively with university leadership, faculty partners, student organizations, & external stakeholders
- Grow Strategically, Act Thoughtfully; Support the university in creating operational efficiencies

How can YOUR role on Staff Council help?

Advocacy and Action

- Ensure staff voices are heard – reach out to your constituents. Bring feedback to Staff Council meetings.
- Lead with resilience and compassion
- Stay active – attend meetings and events
- Find collaborations that strengthen Staff Council. If applicable, work with your local chapters.



Commitment to the Future

Leading with Heart



Dedication to staff and institutional well-being



A promise to listen, advocate, and lead



Together, we will build a *brighter future*

IOWA

Thank You

Neda Barrett
neda-barrett@uiowa.edu