
Parking & Transportation – Hawkeye Parking Ramp & Other Impacts to P&T Operations

Debby Zumbach

Associate Vice President and Director, Parking and Transportation/ Business Services • Finance & University Services

Fun Facts about Parking and Transportation

A Look Inside Parking

PARKING BY THE NUMBERS

17,314

Total parking spaces managed

5,265

Bicycle parking spaces

2,414,824

FY22 hourly transactions

47%

Reduction in number of citations issued annually since 2002

976

Motorist assists including jump starts and gas in FY22

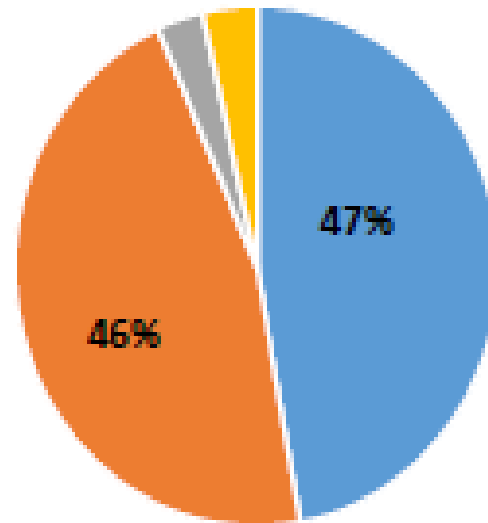
16%

Number of free citation issued in FY 22 as educational warnings

21,094

Parking permits for faculty, staff, and students

Parking Revenues



- Permit Parking Fees
- Hourly Parking Fees
- Athletic Events/ Investments/ Misc.
- Citations

\$22,938,039 total revenue

Commuter Programs

THE PROGRAMS

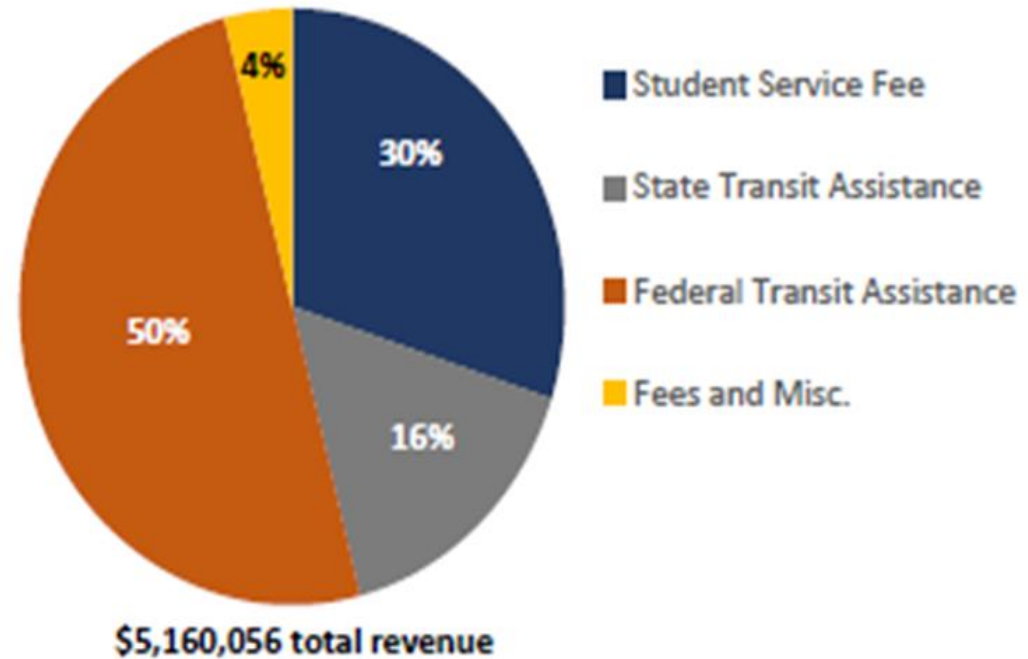
- Employee Vanpool
- Student U-PASS
- Employee U-PASS
- Employee Carpool
- UI RideShareNetwork
- Bicycle
- 380 Express

COMMUTING BY THE NUMBERS

63.7	395
Longest one-way van pool commute	Vanpool members
1,408	5,189,855*
Bicycles parked at peak weekday time on campus	Annual commute miles reduced by vanpool, U-PASS programs and 380 Express
2,686	7.7%
U-Passes for employees and students	Walk to work in Iowa City (per 2020 American Commuting Survey 5-year Estimates)
11 th in the Nation	
Transit rides per/capita FY13	

CAMBUS

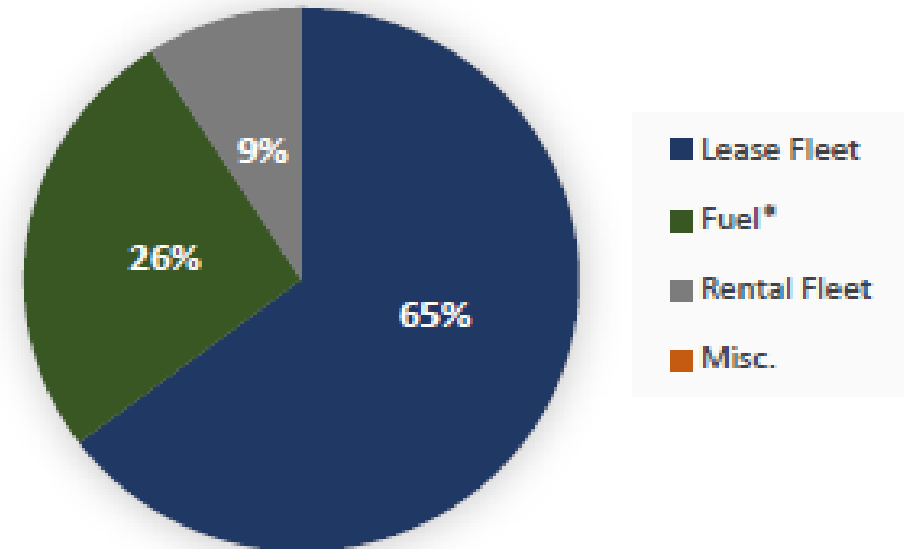
- 2,354,624 rides provided
- 2,251 student labor hours
- 55,698 Bionic Bus Rides
- \$550,000 Cost of a new bus



Fleet Services

- 558 vehicles in inventory
- 4,624,037 miles driven
- 144,121 gallons of E85 gas used

Fleet Services Revenues FY 22



\$4,571,280 total revenue

*Not including Rental Fleet

Hawkeye Parking Ramp

June 2023 – Spring 2025



Hawkeye Parking Ramp

Hawkeye Parking Ramp



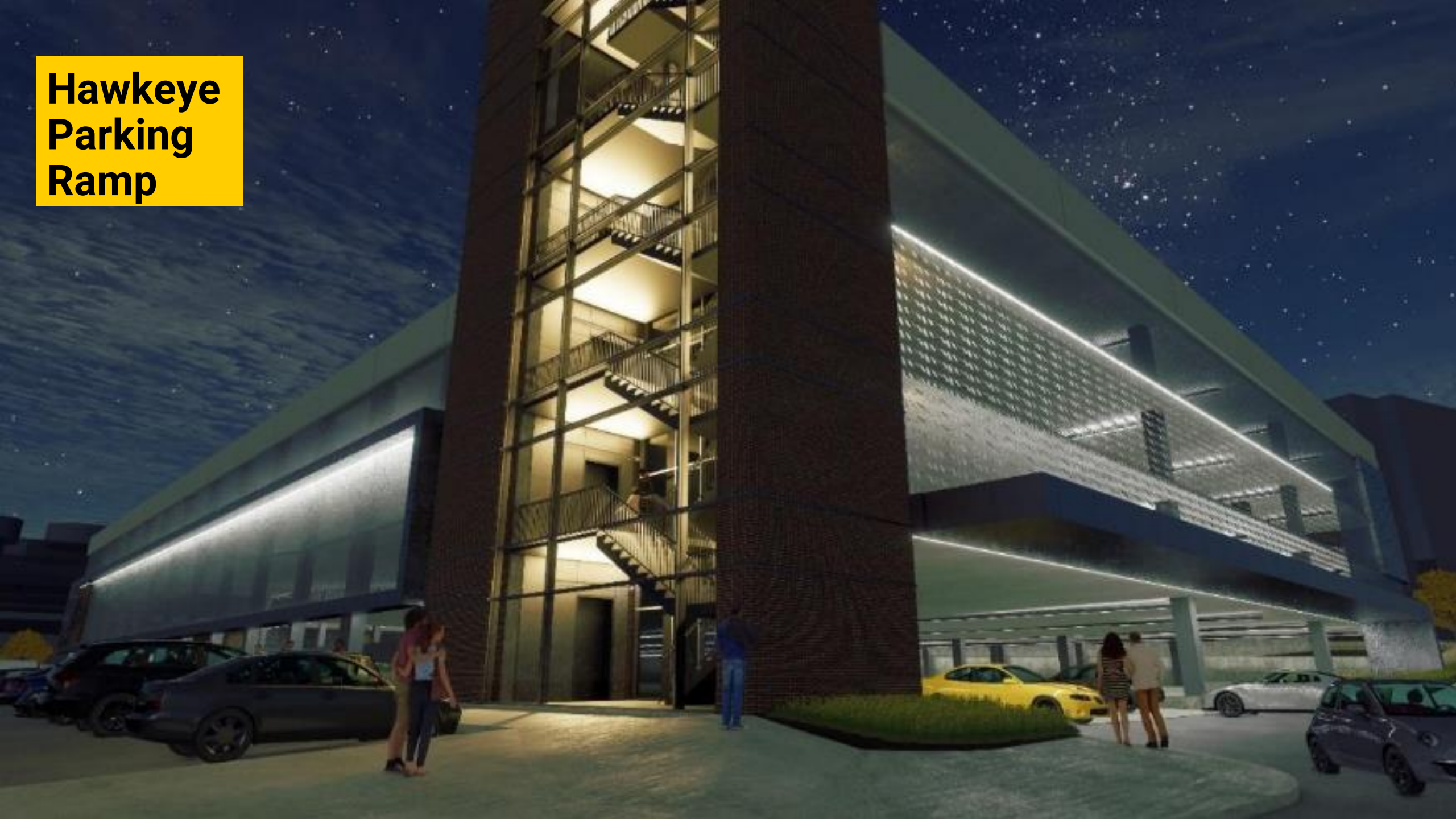
Hawkeye Parking Ramp



Hawkeye Parking Ramp

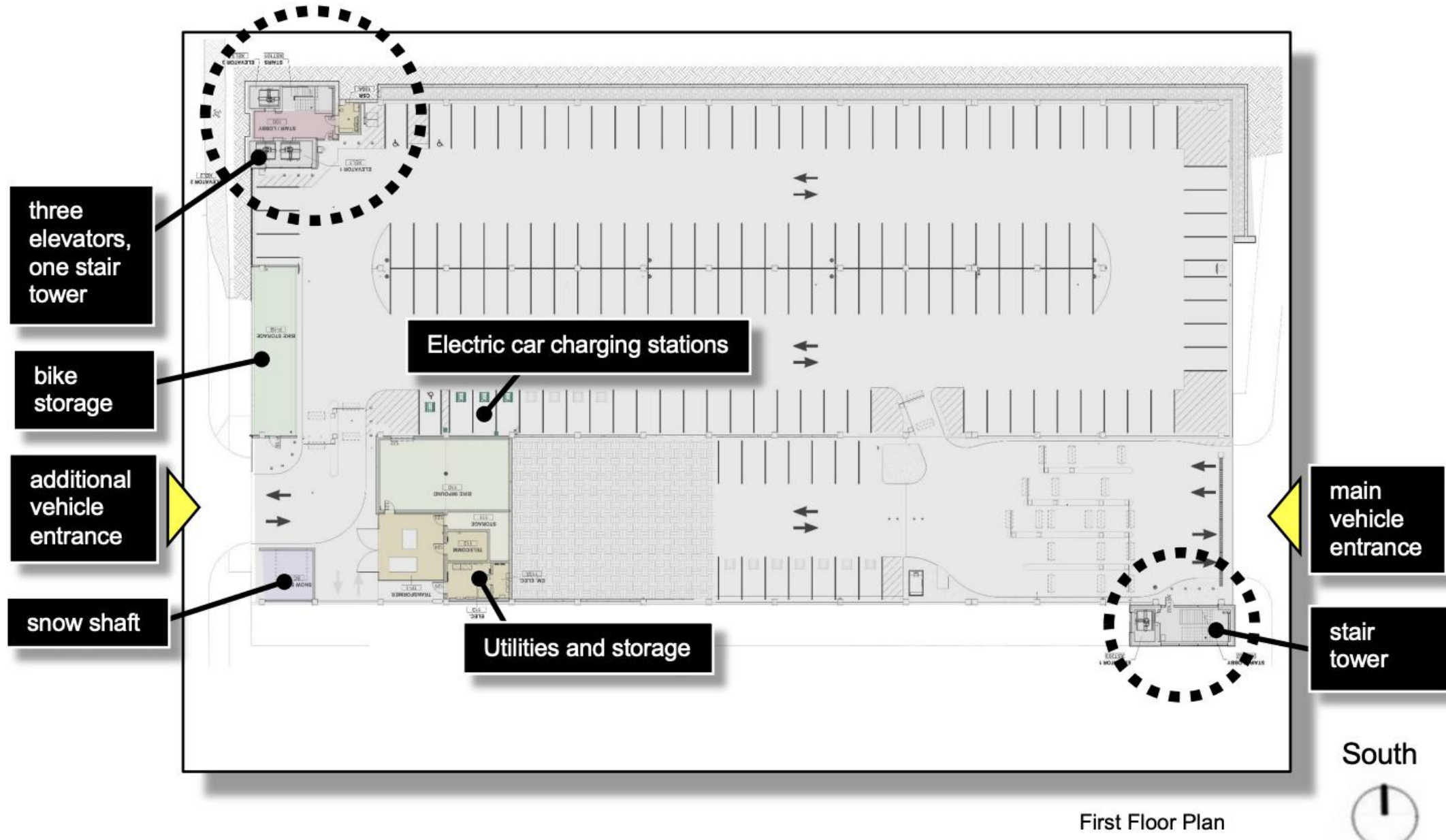


Hawkeye Parking Ramp



Hawkeye Parking Ramp

Fourth Floor Plan (typical)



Other Projects

- ▶ Invested \$3.5M in three different temporary surface parking to add 430 spaces on the West Campus to reduce impact of the Hawkeye Parking Ramp
- ▶ Permission to proceed with a second new ramp on the West Campus.
- ▶ Released first-ever real-time parking availability dashboard to assist with patient and public parking during 10-year facilities master plan.
- ▶ Completed elevator and public space upgrades in Hospital Parking Ramp 3.
- ▶ Upgrading airflow circulation equipment in Hospital Parking Ramp 2.
- ▶ Adding EV stations across campus and in patient ramps.
- ▶ Updated GPS equipment on all CAMBUS vehicles so departure predictions and app use is more reliable for riders.

Parking Rates FY25



Goals for Rate Increase



Finances

120% debt service ratio
of required for bonds

Future capital
improvements

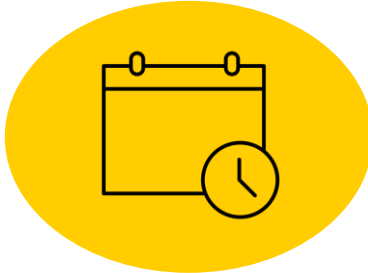
Cost increases



Proximity/premium

Surface A Lot Premium

Hawkeye Lot Location



Past and future

Student rate lowered
by 50% in 2017

Patient ramp,
employee use –
HR1 demolition

Permit Type	Actual FY 2024	Proposed Change	Percent Change	Proposed FY 2025
ANNUAL RATE BASIS				
Faculty / Staff / Student				
Physicians Permit ¹	\$2,640.00	\$180.00	6.8%	\$2,820.00
Ramp Reserved ¹	\$1,320.00	\$60.00	4.5%	\$1,380.00
Ramp Night ¹	\$744.00	\$0.00	0.0%	\$744.00
Surface Reserved A ¹	\$744.00	\$60.00	8.1%	\$804.00
Iowa City Bus Pass with parking ⁶	\$336.00	-\$336.00	-100.0%	\$0.00
Coralville Bus Pass with parking ⁶	\$336.00	\$0.00	0.0%	\$336.00
Surface Night ¹	\$372.00	\$0.00	0.0%	\$372.00
Surface Reserved B ¹	\$588.00	\$12.00	2.0%	\$600.00
Commuter ¹ A	\$324.00	\$12.00	3.7%	\$336.00
NEW Commuter ¹ B - (SSB, Oakdale, Hawkeye)	\$240.00	\$0.00	0.0%	\$240.00
Night and Weekend	\$204.00	\$36.00	17.6%	\$240.00
Iowa City Bus Pass without parking ⁶	\$180.00	-\$180.00	-100.0%	\$0.00
Coralville Bus Pass without parking ⁶	\$180.00	\$0.00	0.0%	\$180.00
Motorcycle	\$168.00	\$12.00	7.1%	\$180.00

\$2.30

Total
average
increase/mo
nth

0.55%

increase per
year
compared to
2015

Business Services | Parking and Transportation

Questions?

→ <https://transportation.uiowa.edu/>